

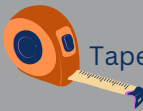
# Colorful Home Inc.

## MEASURING GUIDE



This guide along side the “How to measure your kitchen” video () will give you step-by-step instructions on how to measure and create a floor plan (aerial view) of your space. This information will provide our designers with everything they need.

### YOU WILL NEED:



Tape Measure



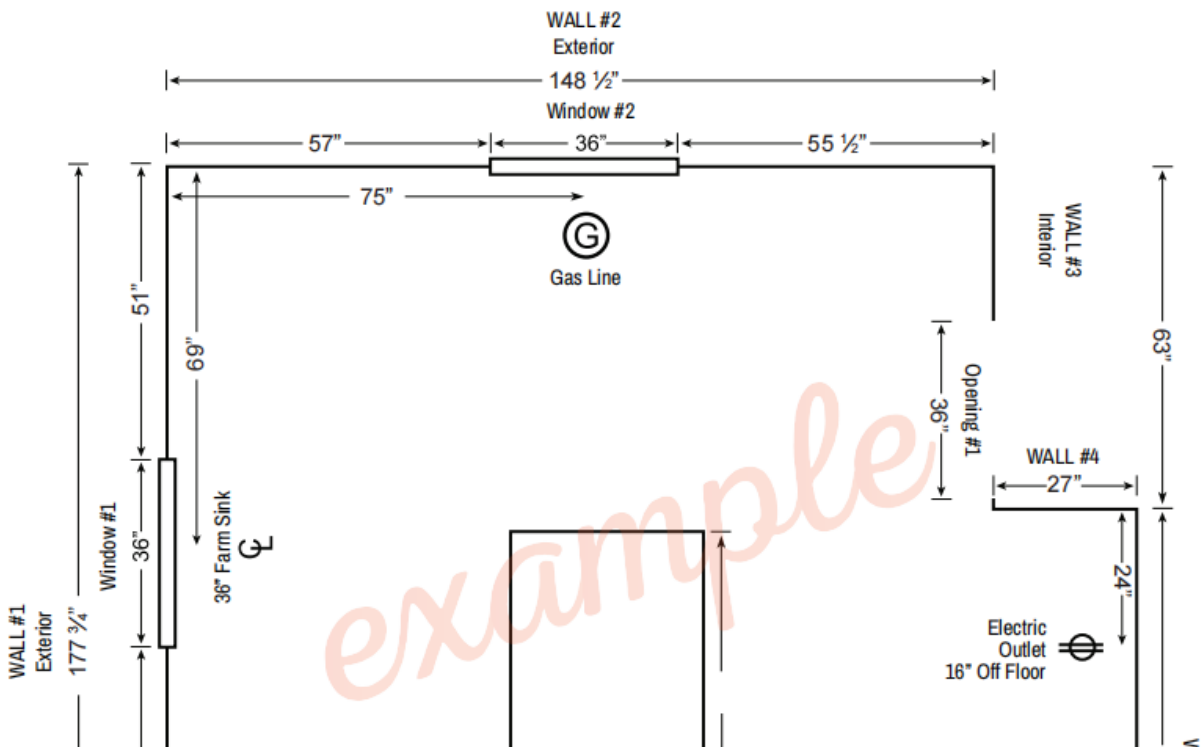
pen /pencil

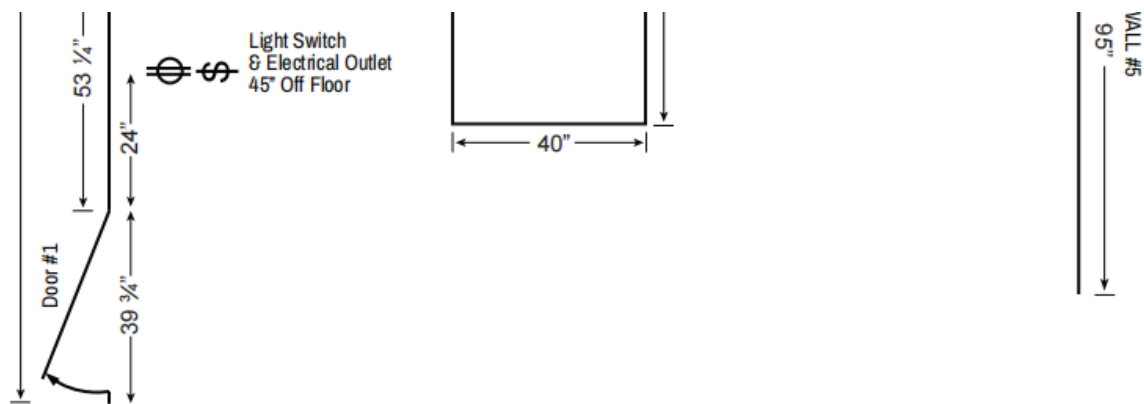


Measuring Guide

Name:		Phone:	
Email:		Door Style:	
Address:		Designer:	

Please use the example below for your reference while creating the floor plan of your space.





**Utility/Mechanical Legend:** Use these symbols on your floor plan.

☪ Center Line      \$ Light Switch      ▲ 220V (Electric Stove)      ⌚ Outlet      (G) Gas

## Step 1: Measure Your Space

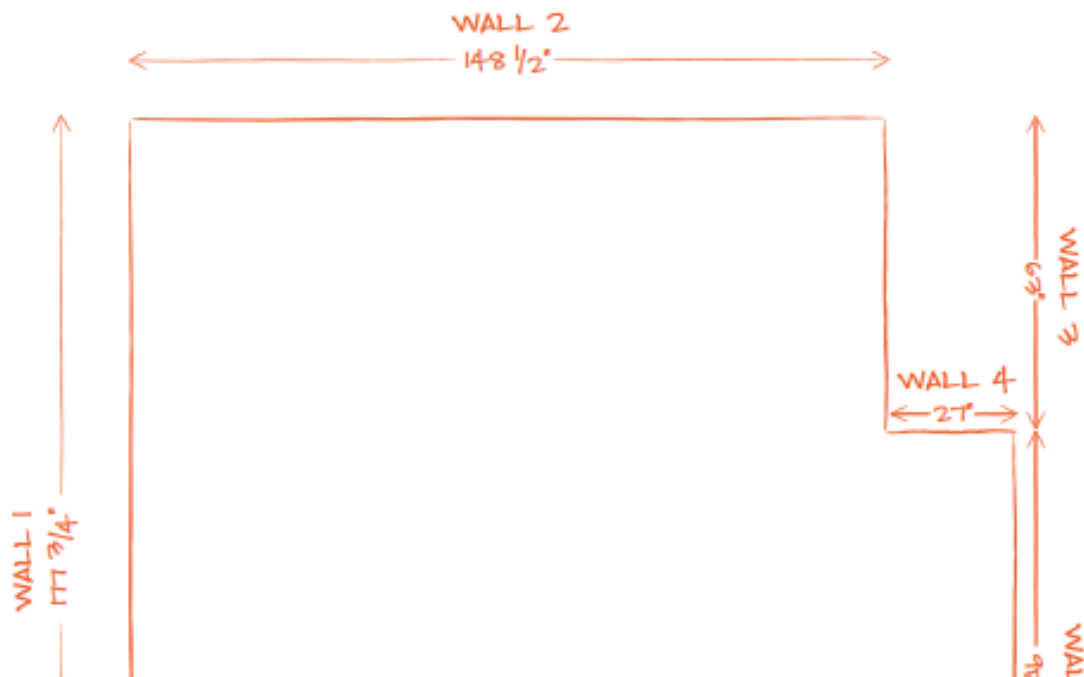
- Starting in the left corner, measure each wall in the space that

will contain cabinets and record those measurements (in inches)

on the "Floor Plan Design Grid" located on the last page of

this Measuring Guide.

- Number each wall on the floor plan.



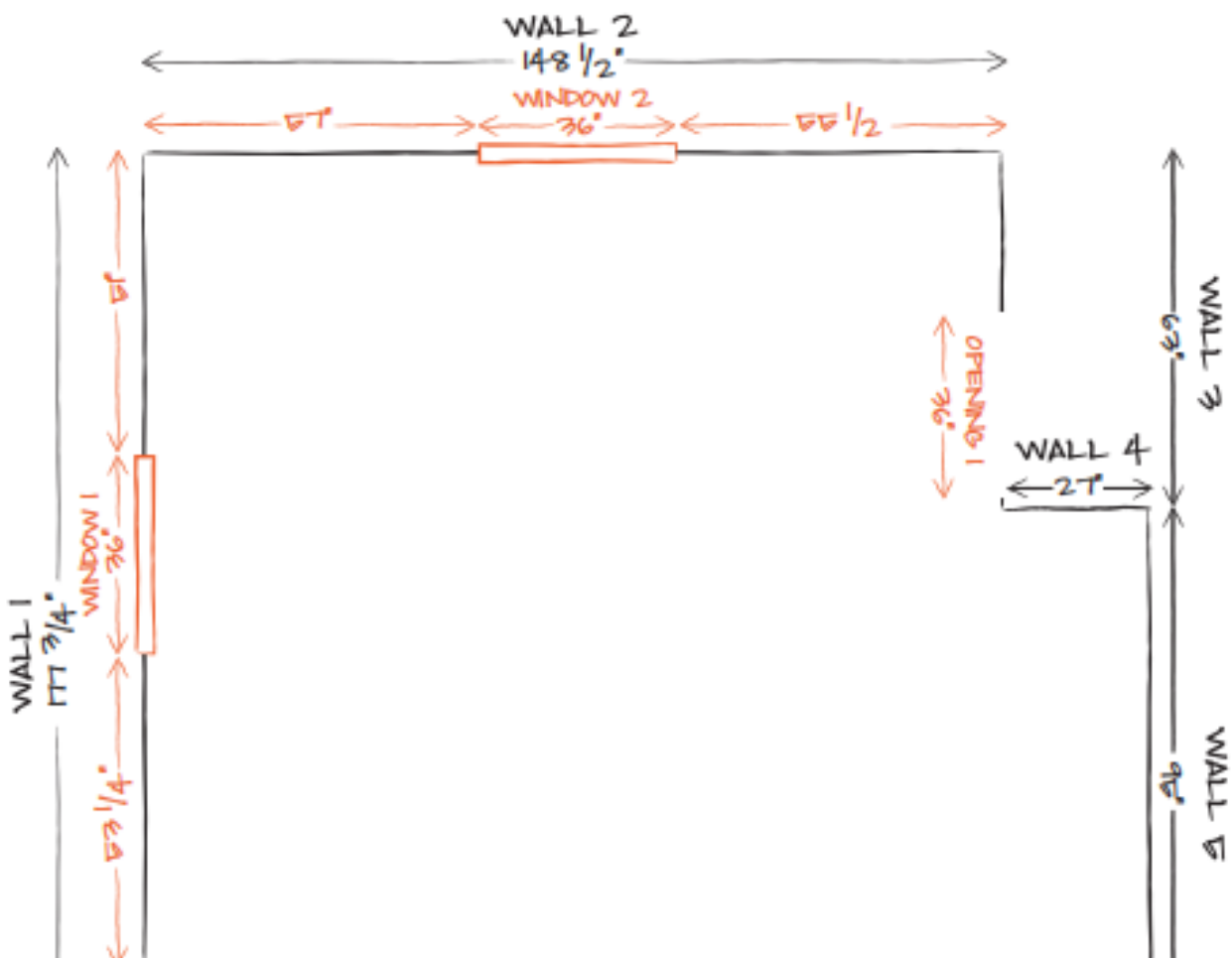


**TIP**

Be sure to measure the full length of each wall.

## Step 2: Doors, Windows, Room Openings

- Locate and measure doors, windows and room openings.
- Record and Number each door, window and room opening on the grid.
- Record the corresponding dimensions in the measurement charts below.





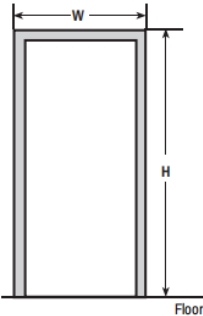
**TIP**

When measuring doors, windows and room openings include the trim/casing in the dimensions.

# Door/Opening Measurements

\*Label on Floorplan using the corresponding numbers below

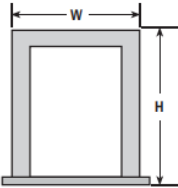
Opening or Door	Width	Height	Notes:
1			
2			
3			
4			



# Windows Measurements

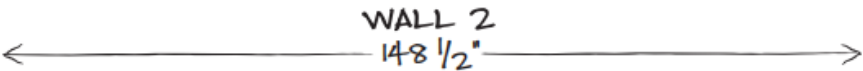
\*Label on Floorplan using the corresponding numbers below

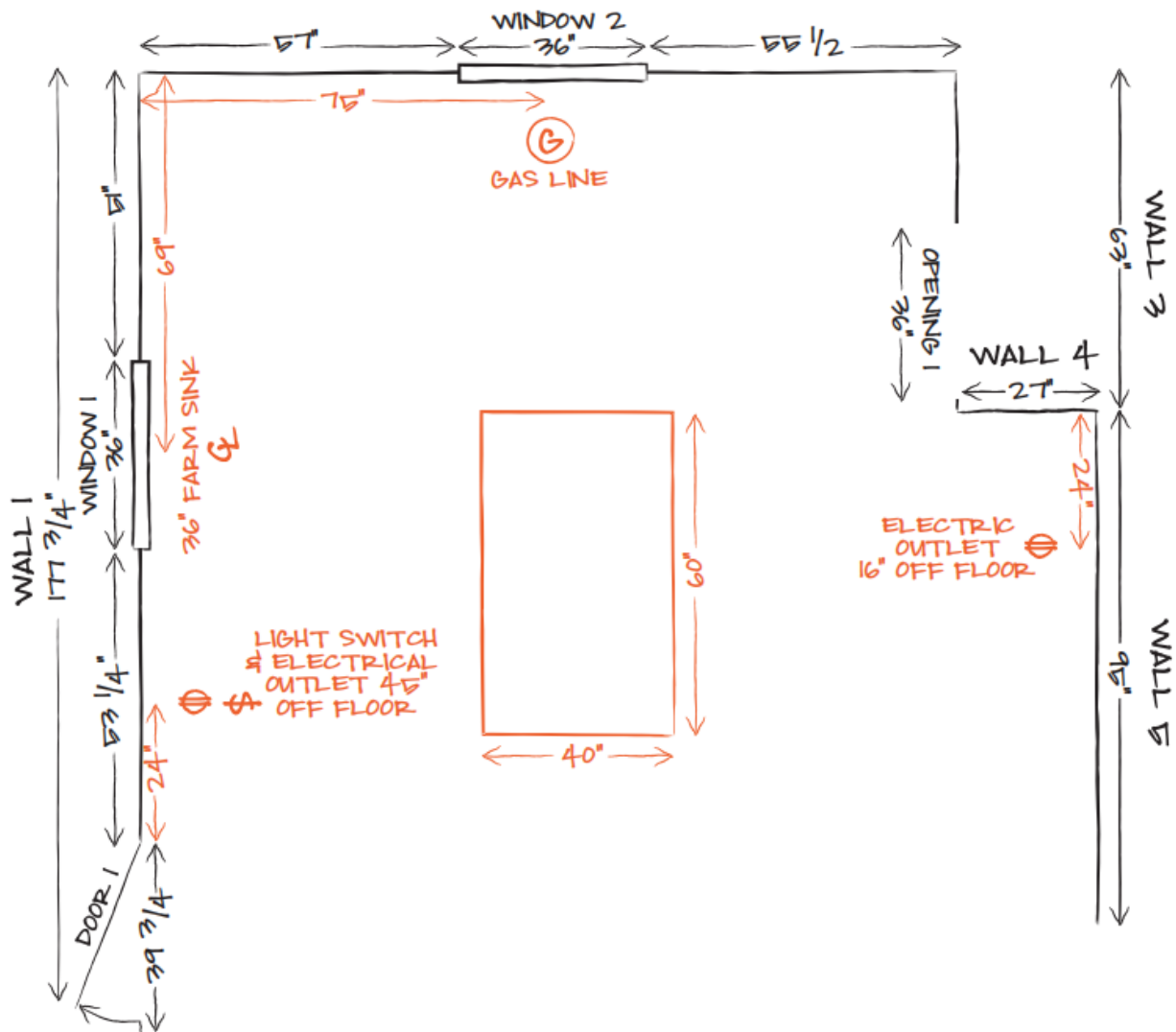
Window	Width	Height	Notes:
1			
2			
3			
4			



## Step 3: Obstacles

- Locate and measure obstacles such as electrical outlets, vents, pipes, radiators, ect.
- Record any islands you already have or wish to add.
- Record and Number each obstacle on the grid.





# Step 4: Appliances

Common appliances typically come in standard sizes but it is important that we have the measurements. Luxury appliances such as cooktops, range hoods, warming drawers, and wine chillers have dimensions that can vary drastically

**TIP**

Send us manufacturer specification sheets and installation guides if possible.

## Range

Brand/Model	Width	Depth	Height

## Microwave

Brand/Model	Width	Depth	Height

Refrigerator

Brand/Model	Width	Depth	Height

Dishwasher

Brand/Model	Width	Depth	Height

Cook-Top

Brand/Model	Width	Depth	Height

Oven

Brand/Model	Width	Depth	Height

Hood

Brand/Model	Width	Depth	Height

Other

Brand/Model	Width	Depth	Height

Step 5: Ceiling Height

Accurate ceiling height measurements are very important when determining which wall cabinets and crown moulding you want in your new kitchen. It is very important to take several measurements as the height can vary in different spots in the room. Many older homes have soffits above their wall cabinets that need to be taken into consideration when creating your design.



**TIP**

Measure height in 3 areas and record the shortest dimension.

A = Ceiling Height

Ceiling Height: \_\_\_\_\_

Soffits (the area between the top of the wall cabinet and the ceiling).

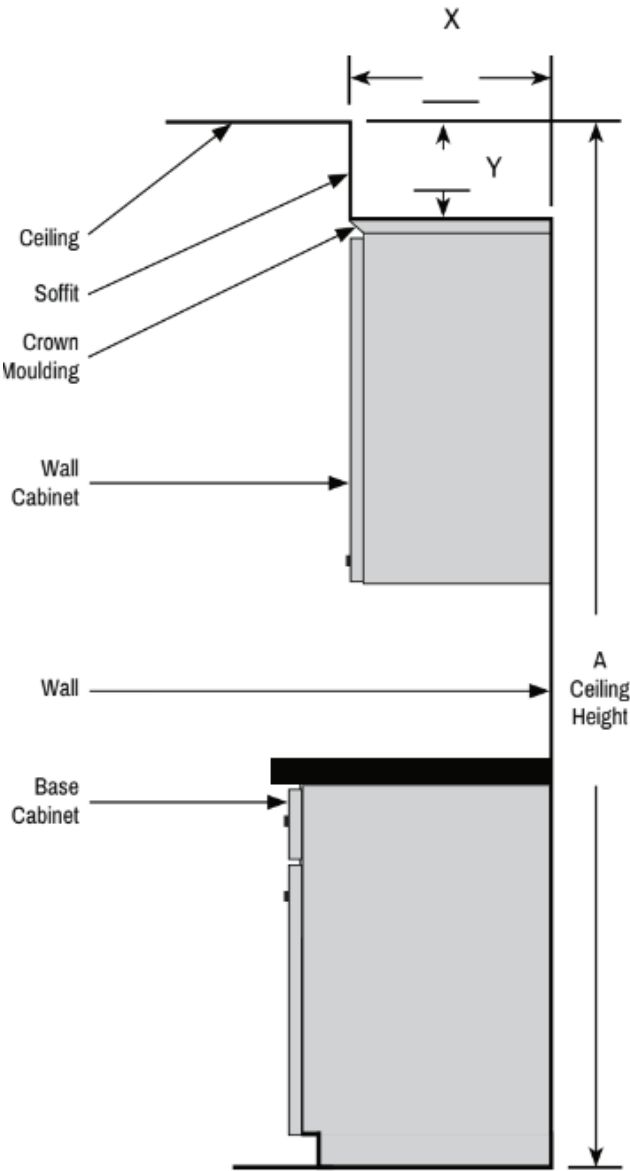
Does the room have soffits?

If yes, please mark the diagram to the right.

☐ Yes ☐ No

Do you plan to keep the existing soffits?

☐ Yes ☐ No



Please check any additional items


you are interested in adding:

- |                                        |                                                   |                                                  |                                               |
|----------------------------------------|---------------------------------------------------|--------------------------------------------------|-----------------------------------------------|
| <input type="checkbox"/> Base Molding  | <input type="checkbox"/> Garbage Pull Out Cabinet | <input type="checkbox"/> Microwave Upper Cabinet | <input type="checkbox"/> Soft Close Doors     |
| <input type="checkbox"/> Crown Molding | <input type="checkbox"/> Glass Doors              | <input type="checkbox"/> Open Shelves            | <input type="checkbox"/> Wide Storage Drawers |

- ☐ Crown Molding on the Ceiling
- ☐ Cutlery Divider
- ☐ Decorative Door Panels
- ☐ Lazy Susan
- ☐ Light Rail Molding
- ☐ Microwave Base Cabinet
- ☐ Plate Rack
- ☐ Roll Out Trays
- ☐ Spice Pull Out Cabinet
- ☐ Wine Storage
- ☐ Wood Hood

# Step 6: Photos & Submit

Now that you have completed the measuring guide, it is time to take some photos of your current space. Make sure to include pictures of each wall that will contain cabinets.



**TIP**

Include photos of any special obstacles that you may have found difficult to include in your drawing.

Email: [Colorful4466@gmail.com](mailto:Colorful4466@gmail.com)

Way to Submit:



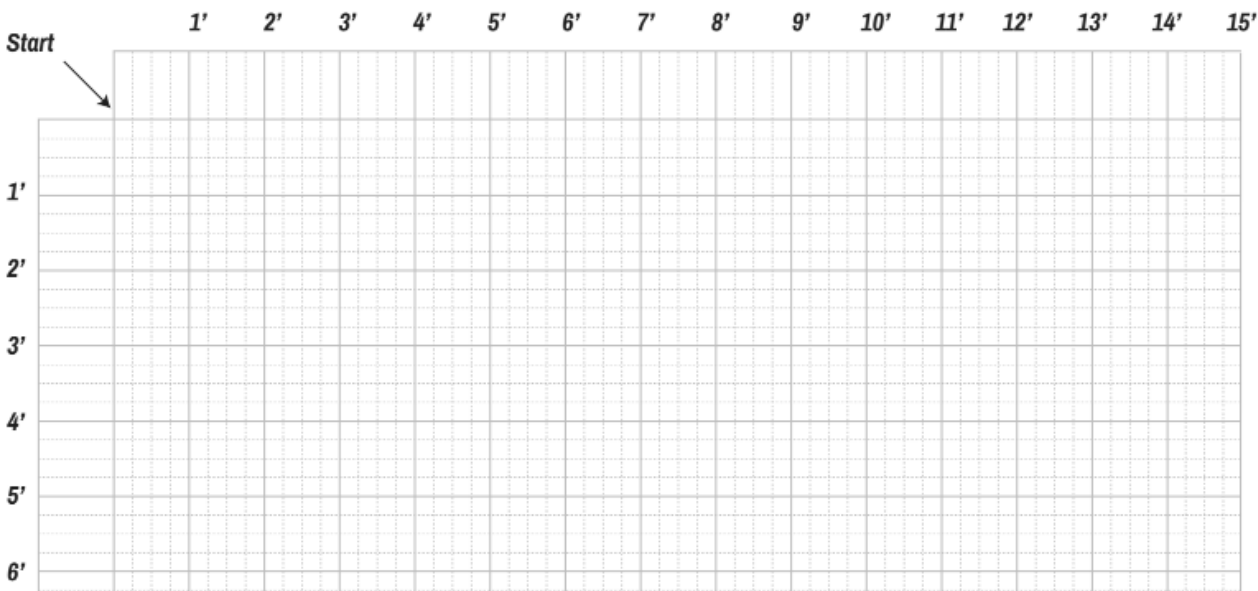
[colorful4466@gmail.com](mailto:colorful4466@gmail.com)

## Floor Plan Design Grid

Use the grid below to draw the floor plan (aerial view) of your space. Follow each step of the guide to complete the drawing.

- Step 1: Measure your space • Step 2: Doors, Windows & Room Openings
- Step 3: Obstacles • Step 4: Appliances
- Step 5: Ceiling Height • Step 6: Photos and Submit

Note: Each small square is 3” x 3” and each large square is 12” x 12”.







# Project Approval

Prepared by:

Approved by:

POSITION

POSITION

DD/MM/YYYY

DD/MM/YYYY